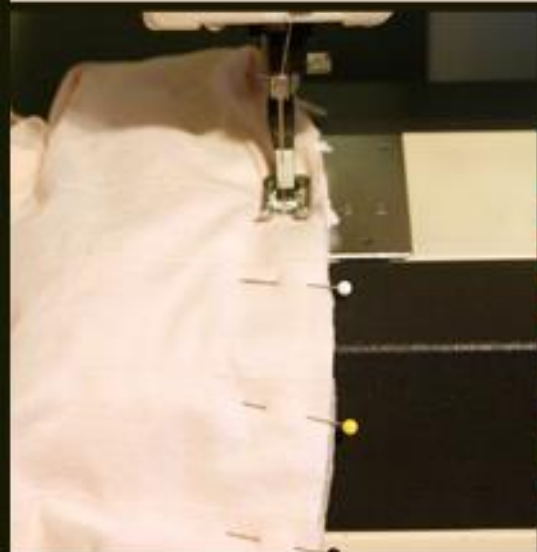




15 Sewing Patterns for Women's Dresses & Other Pretty Projects

ALLFREESEWING 



15 Sewing Patterns for Women's Dresses & Other Pretty Projects

Copyright 2013 by Prime Publishing LLC

All rights reserved. No part of this book may be reproduced or transmitted in any form or by any means, electronic or mechanical, including photocopying, recording, or by any information storage or retrieval system, without written permission from the publisher, except in the case of brief quotations embodied in critical articles and reviews.

Trademarks are property of their respective holders. When used, trademarks are for the benefit of the trademark owner only.

Published by Prime Publishing LLC, 3400 Dundee Road, Northbrook, IL 60062 – www.primecp.com

ALLFREESEWING 
Free Patterns To Keep You In Stitches
[Free Sewing Projects](#)

ALLFREECROCHET 
Free Crochet Patterns For Happy Hooking
[Free Crochet Projects](#)

ALLFREEKNITTING 
Free Knitting Patterns for Happy Stitching
[Free Knitting Projects](#)

favecrafts   
[Free Craft Projects](#)

FAVEQUILTS 
Quilts, Fabric, and More

[Free Sewing Projects](#)

ALLFREESEWING 
Free Patterns To Keep You In Stitches

[Free Quilt Projects](#)

ALLFREEBEADEDJEWELRY
"Learn to Make Fabulous Jewelry and More"

[Free Beaded Jewelry Projects](#)

AllFreeHolidayCrafts     
Creations and Celebrations for Every Occasion

[Free Holiday Projects](#)

ALLFREECHRISTMASCRAFTS 
Create The Christmas Of Your Dreams

[Free Christmas Projects](#)

ALLFREECROCHETAFGHANPATTERNS
Your #1 Source for Free Crochet Afghan Patterns

[Free Crochet Afghan Projects](#)

ALLFREEPAPERCRAFTS 
"Nothing Is A Waste Of Paper"

[Free Paper Craft Projects](#)

ALLFREEDIYWEDDINGS   
Make Your Own Happily Ever After

[Free DIY Wedding Projects](#)

Letter from the Editors

Hi Sewists,

While we recognize that anyone (male or female) can be a sewist, every now and then we like to focus on lovely patterns made specifically for women. Why? There's something about a special handmade dress that we know our readers adore. And we can't blame you! With the help of some of our talented designer friends, we've put together a collection of dresses and other lovely projects we know you'll enjoy making. From outfits perfect for spring parties, to home décor inspired by the things you've seen in stores, explore this free eBook full of fresh ideas.

Happy Sewing!

You can find additional wardrobe projects, home décor ideas and more at www.AllFreeSewing.com.

Our eBooks, like all our sewing projects, are absolutely FREE to members of our sewing community. Please feel free to share with family and friends and ask them to sign up at our website for our [free e-mail newsletter](#).

Happy Sewing,

The Editors of AllFreeSewing

www.AllFreeSewing.com

15 Sewing Patterns for Women's Dresses & Other Pretty Projects Table of Contents

Mama's Got a New Dress.....	5	DIY Anthropologie Inspired Bolster Pillow ..	32
The "Lemonade" Dress	10	How to Make a Quick Cuff Bracelet.....	38
Strapless Maxi Dress	13	Bachelorette Party Dress	40
Strapless Ruffled Maxi Dress.....	16	Classic A-Line Dress.....	44
30 Minute 4 Seam Caftan	21	Femme Fatale Cocktail Dress.....	46
The Jersey Skirt	24	Easy Summer Halter Dress.....	48
The Crafter Tee Tote.....	26	Tunic Dress Tutorial	55
Chevron Swing Top	29		

Mama's Got a New Dress

By: Alexis Meschi from Made by Lex

Take an old T-shirt and a mere yard of fabric and turn it into a trendy new dress. It's one cohesive outfit that looks like two pieces. Show up to your next party in this little number and you'll not only look great, you'll be comfortable too!



Materials:

- Old T-Shirt and coordinating fabric
- Old men's shirt or fabric to match
- General Sewing Supplies

Instructions:

1. Start with an old T-shirt and a yard of coordinating fabric.



2. Find your natural waist line and cut the shirt at that point. Save the scraps!



3. Cut out a few more scraps. Cut out a piece from your skirt fabric and a piece of coordinating cream chiffon.



4. Fold them in half and ruffle them.



5. Adding a lot of detail to this T-shirt will weigh it down a lot. Add a piece of lightweight interfacing to the inside of the shirt to balance it.



6. Now add your first layer of the ruffle bib. Start with the outer layer. You may want to lay them all out beforehand so you can mark where they will need to be sewn. Pin the first layer in place then stitch.



7. Add the second. Pin, then sew.



8. Repeat with the third.



9. To make the front look completed add a button strip. You can cut this off another shirt. You can also create one by adding a piece of fabric then sewing on some old buttons.



10. Iron the edges in then pin it in the center.



11. After that, fold it over the top of the shirt and pin down. Then stitch it in place.



12. Determine the length you want your skirt to be. Before attaching it to the top hem it. Here a wide hem was made.



13. Here's another little extra step. If you want to bring the color of the dark top down to the bottom it can look really put together and well thought out. On the underside of the skirt add a little dark grey hem tape just peeping out. It really makes this dress look more complete.



14. Very slightly ruffle the top of your skirt. Then stitch the ends together to create your skirt piece.



15. Now it's time to attach it to the top. You might want to create a drawstring waistline so you can adjust it for your own waist without adding a zipper. In order to do that you need to leave an overhand as shown on the inside of the skirt. Pin and sew the skirt to the top.



16. Now fold that flap over and pin it to the inside of the skirt. Stitch it closed.



17. Once you turn it right-side-out, this is what it will look like. You now have a little pocket to pull a drawstring through.



18. On the side seam, create two small holes for your drawstring. You can use your seam ripper.



19. Grab whatever you want to use for your drawstring and pull it all the way through.



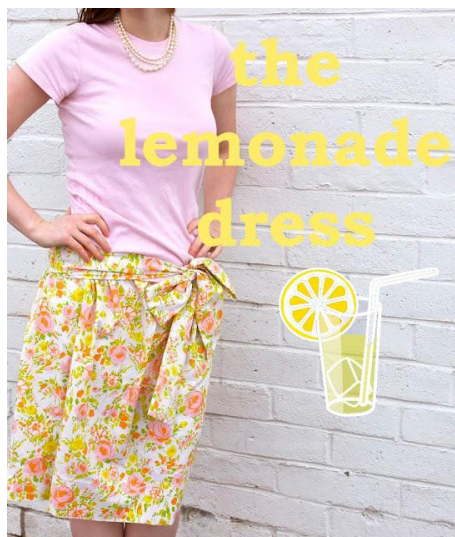
20. And now you're done!



The "Lemonade" Dress

By: [Disney Powless from Ruffles and Stuff](#)

The Lemonade Dress is a free sewing pattern that joins together a T-shirt and a gathered skirt to make a brand new dress. It screams spring or summer and can be worn with or without a sash.



Materials:

- One fitted T-shirt or tank top
- Fabric (Vintage sheets work well for this project)
- General Sewing Supplies

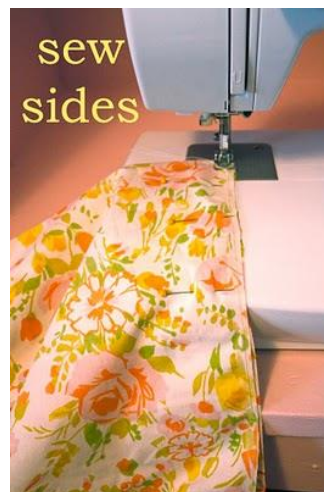


Instructions:

1. Start with a shirt or tank that fits you well (it won't work as well with a baggy shirt) and some fabric. Vintage sheets work well because then it's already hemmed! You'll need enough fabric for 1.5 X your hip measurement; cut to about 20" in length.



2. Sew the two 20" sides of fabric together, with right sides facing each other.



3. Sew a straight stitch on the longest length, all the way around the top of your skirt piece and pull one of the threads to gather until it's the same size as your shirt hem.



4. Pin and sew to the inside of the bottom of your shirt, using a zigzag stitch. Try to match up your stitches with the shirt's existing hem and avoid letting your shirt fabric stretch.



5. If you'd like to make a sash (useful for cuteness, and hiding any ruffled seams for the beginner sewer!) cut an 8" length of fabric that is your hip measurement + 50 inches. You will probably have to piece two together to get the length, which is fine.



6. With the right sides together, fold the sash in half length-wise and sew three of the four sides, leaving one end open.



7. Turn the sash right-side-out, fold the edges of the open end under, and stitch closed.



8. Wrap it around yourself, and tie in a bow!



10. It's plenty cute without the sash, too!



11. Or with a bow!



Strapless Maxi Dress

By: [Sharon from Sharon Sews](#)

Here's the perfect project for a beginner sewist. Beat the summer heat in this trendy and stylish Strapless Maxi Dress. Learn how to sew a dress with this helpful tutorial and your summer wardrobe will be full of fun maxi dresses!



Materials:

- Lightweight woven fabric 45" wide - enough yardage to cut two dress lengths.
- Choose a lightweight fabric as the width of the dress is about 64" when sewn. If you want less ease just cut your rectangles narrower.
- Thread
- ½" elastic
- Bias Tape
- Tape Measure
- Chalk or other Marking Pen
- Sewing Machine
- Fabric scissors

Instructions:

1. Determine the length of the dress

Women's Dresses & Other Pretty Projects

- Measure from your underarm to the floor (or where you want your dress to end).
- Add 3 inches to this measurement for upper casing and hem. This will be the length you cut each rectangle. In this example the dress was cut 50" long.

2. Cut the fabric

- Lay your fabric on a large flat surface. You can use your cutting table, but the floor works just as well.



- Cut two rectangles 33" wide by the length you determined in the step above.
- If you want a closer fitting dress this is where you'll want to cut a narrower rectangle.
- If you want a looser fit, cut the rectangle wider.

3. Sew the side seams

- With right sides together pin the two large rectangles together along the long edges, which are the side seams.
- Using a ½" seam allowance, stitch the side seams.
- If desired, finish the seams with a serger, a zigzag stitch, or pinking shears.

- Press the seams open.

Optional walking slits: If you want a walking slit, stop sewing the side seam about 18" from the lower edge on one or both sides. If you do that be sure to turn under and hem those raw edges!

4. Create the casings

- Turn under $\frac{1}{4}$ " on the top edge of the dress. Press.



- Turn under another $\frac{3}{4}$ " on the top edge. Press.
- This is the upper casing of the dress.



- Stitch close to the pressed edge forming the casing.

Women's Dresses & Other Pretty Projects



- Leave a 1" opening to insert the elastic.



- Turn the dress so the wrong side of the fabric is facing out.
- From the top edge of the dress, measure down 9" and mark with chalk or pen.



- Continue measuring and marking 9" down from the top edge of the dress until you've drawn a solid line around the entire dress. This is the line for the waist casing.

- Starting at one side seam, place one edge of the seam binding along the line you just drew.
- Pin in place.
- Stitch close to both edges of the seam binding. Be sure to leave a 1" opening at one side seam to insert elastic.

5. Insert the upper casing elastic

- Cut a piece of ½" elastic that fits snugly around your chest (above your bust). Place a safety pin on one end of the elastic and thread it through the upper casing.



- Don't forget to pin the other end of the elastic to the garment or you'll lose the elastic in the casing when you begin to pull to thread the elastic through.
- Once the elastic is all the way through, secure the elastic to the dress by pinning both ends to the dress seam.
- Try the dress on to make sure the elastic is tight enough to hold the dress up. Adjust if necessary.
- Remove the pins, overlap the two edges of elastic, stitch together securely, and tuck into the casing.
- Sew the casing opening closed.

6. Insert the waistline casing elastic

Women's Dresses & Other Pretty Projects

- Cut a piece of ½" elastic that fits comfortably around your waist.
- Place a safety pin on one end of the elastic and thread it through the waist casing you just created with the seam binding.
- Once again, don't forget to pin the other end of the elastic to the garment.
- Overlap the two edges of elastic, stitch together securely and tuck into the casing.

7. Hem the dress

- The hem of the dress is created the same way as the upper casing.
- Turn under ¼" on the bottom edge of the dress. Press.
- Turn under another ¾" on the top edge. Press.
- Stitch close to the pressed edge.

Done!

Add a belt, some great costume jewelry and go enjoy the compliments you'll get while wearing your new dress.

Strapless Ruffled Maxi Dress

By: [Sharon from Sharon Sews](#)

You've seen this trendy dress in the magazines and on all the celebrities. Impress your friends by creating the look for yourself! Use this free pattern to make the Strapless Ruffled Maxi Dress. Style it with fun jewelry for a fashion-forward outfit.



Materials:

- Gauze or other lightweight fabric
- ¼" elastic
- Single fold bias tape
- Thread
- General Sewing Supplies

The finished length of the dress is approximately 51" measured along the side seam. Lengthen or shorten as needed.

Instructions:

1. Make your dress pattern

Measurement A

Measure your bust around the fullest part.

Add 12" (this is the ease) and divide by two.

Example: Full bust = 36" + 12" = 48" / 2 = 24"

Measurement B

Measure your hip around the fullest part.

Add 12" (this is the ease) and divide by two.

Example: Full hip = 38" + 12" = 50" / 2 = 25"

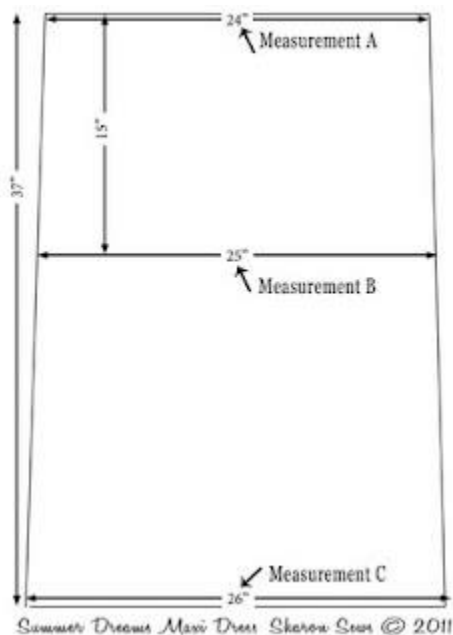
Measurement C

Add 1" to measurement B

Example: Measurement B = 25" + 1" = 26"

- On a large sheet of paper draw a vertical line 37" long down the center of your paper.
- Measure 15" down from the top of the vertical line and make a mark.
- Starting at the top of the line draw a horizontal line equal to *Measurement A* centered on the vertical line.
- Starting at the 15" mark draw a horizontal line equal to *Measurement B* centered on the vertical line.
- Starting at the bottom of the line draw a horizontal line equal to *Measurement C* centered on the vertical line.
- Connect the top line to the bottom line along both sides.
- This is the front and back of the maxi dress.

- If you're full busted, on the front piece measure 1" to the top of the vertical line. Make a mark. Use a French curve to draw a gently curved line from the each side seam to the mark at the center front.



2. Cut the dress

- Cut one dress front
- Cut one dress back

3. Calculate and cut the upper ruffle length

- Multiply *Measurement A* by 1.5. This is the ruffle length *Measurement D*. The ruffle width is 10"
- Cut one front bodice ruffle *Measurement D* x 10"
- Cut one back bodice ruffle *Measurement D* x 10"

Example: *Measurement A* = 24" x 1.5 = 36" so the ruffles to be cut are 36" x 10"

- Cut one front bodice ruffle *Measurement D* x 10"
- Cut one back bodice ruffle *Measurement D* x 10"
- Example: *Measurement A* = 24" x 1.5 = 36" so the ruffles to be cut are 36" x 10"

4. Calculate and cut the lower ruffle length

- Multiply *Measurement C* by 3. This is the ruffle length *Measurement E*. The ruffle width is 17".
- Cut enough lower ruffle pieces to equal *Measurement E* x 17".
- You'll need to piece the ruffle to get the desired length
Example: *Measurement C* = 26" x 3 = 78"

You now have the upper ruffle, the dress, and the lower ruffle.



5. Sew the dress

- Pin the front and back dress right sides together.
- Stitch side seams.



- From the top of the dress measure down 10" on the wrong side and make a mark.



- Draw a line around the entire dress.
- Be sure to use a removable fabric pen or chalk.
- This is the line for the waistline casing. Eliminate this step if you do not want an elasticized waist.



Women's Dresses & Other Pretty Projects

- Pin the single-fold bias tape on the inside of the dress aligning the bottom edge of tape on the marked line.



- Stitch in place close to each edge of the bias tape.



- Pin the front and back upper bodice ruffles right sides together.
- Stitch side seams.
- Turn bottom edge $\frac{1}{4}$ " to the wrong side; press. Turn under $\frac{1}{4}$ " again to the wrong side; press. Stitch in place.
- Gather the upper edge of the ruffle. To gather use a long stitch length and stitch along the upper edge $\frac{1}{2}$ " from the edge leaving thread tails at each end. Stitch a second row of stitches $\frac{1}{4}$ " away from the edge.
- With right sides up (wrong side of ruffle to right side of bodice), pin ruffle to upper edge of bodice matching side seams.

- Adjust gathers to fit.



- Stitch ruffle in place.



- Finish raw edge of seam with bias binding.



- To create the casing turn under $\frac{3}{4}$ " on the upper edge of the bodice; press.
- Stitch casing to the bodice $\frac{1}{2}$ " from the top fold being sure to keep the ruffle free. Leave a 1" opening to insert the

elastic.



- Cut a piece of $\frac{1}{4}$ " elastic a comfortable upper chest measurement plus $\frac{1}{2}$ ".
- Attach a safety pin to one end of the elastic and insert in the casing.



- Pull elastic through the casing. Lap the elastic ends by $\frac{1}{2}$ " and stitch together securely.



- Pin the lower ruffles right sides together. Stitch seams.

- Turn bottom edge $\frac{1}{4}$ " to the wrong side; press. Turn under $\frac{1}{4}$ " again to the wrong side; press. Stitch in place.
- Gather the upper edge of the ruffle.
- Pin ruffle to lower edge of dress right sides together matching side seams.
- Adjust gathers to fit. Stitch.
- Cut a piece of elastic a comfortable waist measurement plus $\frac{1}{2}$ ".
- Attach a safety pin to one end of the elastic and insert in the casing.
- Pull elastic through the casing. Lap the elastic ends by $\frac{1}{2}$ " and stitch together securely.

Done!



30 Minute 4 Seam Caftan

By: [Robie Kay Dodson from So Sew Something](#)

Want to make a unique, flowing maxi dress? Within a half hour you can create this 30 Minute 4 Seam Caftan. Whether you're a mom on the go or getting ready for a night out, this free dress pattern delivers a dress that's great for several occasions.



Materials:

- 3 ¼ yards of fabric
- 4 seams, 4 buttonholes, one long tube to use as a sash
- General Sewing Supplies



Instructions:

1. Start with your fabric. This tutorial uses 100% light weight polyester. You might choose to switch to a breathable fabric such as 100% cotton.



2. First, if your fabric has a factory fold that runs along the length of the fabric, open it up so that you are facing the entire width of the fabric. Then, fold the fabric in half, right sides together, keeping the fold at the top. This means you'll have two equal halves measuring about 1 5/8 yards with the fold at the top.



3. To create your sleeves and side seams, measure down along the selvages on each side about 12". Place a pin. Sew all the way down from the pin to the end of the fabric. (Be sure to

reverse stitch at the beginning since this opening is your sleeve.)



4. Now that you've created your side seams and your sleeves, you need to create your neckline. You can pin your fabric right to your ironing board, and then start guessing how big the opening should be. Start small on this guess - you can always go bigger but you can't go smaller.



5. Next, you'll need to add bias binding along your neckline. If you have enough fabric, create bias tape from the dress fabric. Otherwise, use store bought or coordinating bias tape.

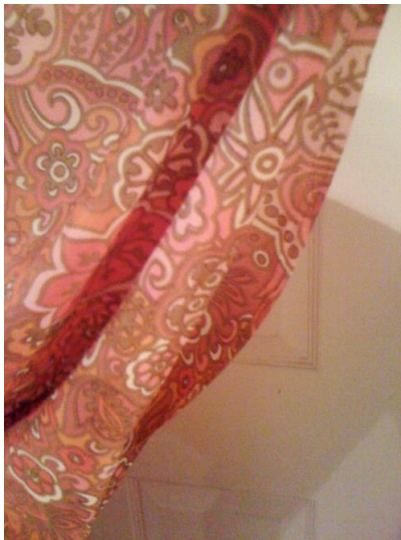


6. Now you need to add four buttonholes at the waist - front and back right side, front and back left side. To decide where, hold the dress up to you and go to a mirror. Locate your waist and put a pin at the very right side and the very left side. Then, back at the ironing board use those pins to also mark the identical spots on the back left and back right. (These button holes are used to hold your belt in place. See photo below) When opening up your buttonhole with a seam ripper, please be sure it's not too dull. You could end up with puckered buttonholes, otherwise.



7. Finally, hem the bottom and create a quick tube for the sash. Thread the sash to the front

from the back buttonholes. You've got yourself a fabulous caftan, maxi dress, billowy dress!



If you're wondering about hemming the sleeves, you use the selvege so there's no need! This truly is a 4 seam, 4 buttonhole, 1 sash piece - easy peasy!

The Jersey Skirt

By: [Disney of Ruffles & Stuff](#)

You'll have a hard time finding anything more comfortable than The Jersey Skirt. It's also one of the easiest skirts to make! This simple sewing project makes a great skirt for any season.



Materials:

- Jersey Yardage for an adult skirt
- T-shirt for a child's skirt
- Thread
- Sewing Machine

For a child's skirt, you can probably use a T-shirt that you have lying around, but for an adult skirt you'll need to get your hands on some jersey yardage.

Before you start: Fabrics usually have more stretch on one side than the other, so be sure that you cut your fabric with the stretchy side goes around you!

Instructions:

1. Measure around your hips (or wherever you wear your skirts). Then cut a waistband that is $\frac{3}{4}$

your measurement, and twice as tall as you want your waistband to be. This was about 26" X 11". (You can also just stretch the fabric around you until it's fairly tight, but not uncomfortable, and use that as your measurement).

2. Cut a skirt piece that is about twice the measurement of your waistband, and however long you want it to be. This is 25" long.

3. Using your machine's longest strait stitch, sew all the way down the top side of the skirt panel. Then pull the top thread to gather, until it's the same length as your waistband.



4. Fold the waistband in half width-wise, and lay the skirt panel on top of the open edges. Try to line it up so that the skirt panel hangs over the waistband edges a little bit.

5. Sew the skirt panel onto the waistband, using a zigzag stitch.



6. Cut out two pocket pieces. Mine were 11" on the top, 6" on the bottom, and 7.5" on the sides. Make sure it's big enough to fit your hands in once sewn!



7. Hold your skirt up to yourself and mark where you want your pockets to be. Pin your pocket onto your skirt and sew on the side with the gathered top showing. For a slouchy pocket, you want your pocket to have extra fabric in the middle, so pin it about 6" apart on top, with about a 4" pleated bottom. (see second photo)



8. Sew the open ends of your skirt together with right sides facing each other, and you're done!



The Crafter Tee Tote

By: [Megan from Brassy Apple](#)

Here's a DIY refashion project that truly calls for a creative mind. Dress up your bag as uniquely as you want because The Crafter Tee Tote is meant to be one of a kind! Learn how to make a tote bag and give this fun project a try.



Materials:

- One T-shirt for the handbag (used yellow youth tee size 10-12)
- One Embroidery hoop set (two rings); these were about 9" handles
- Ribbon (5 ¼ yards)
- Glue Gun
- Scissors
- Sewing machine
- Two large grommets
- Hammer
- Embellishments - buttons, zippers, fabric, T-shirt scraps, etc.

Instructions:

1. Turn the T-shirt you are using for the main handbag inside out and lay flat. Fold in half

lengthwise. Round the bottom by cutting only the bottom hemline about 5 inches up the side.



2. Cut a diagonal line a few inches under the arm to the middle of the T-shirt. Open and lay flat.



3. This shirt ended up measuring about 17.5 inches from top point to bottom. Turn right-side-out.

Women's Dresses & Other Pretty Projects



4. Embellish! Cut out shapes from fabric lay out in a design you like, pin, and sew. Add ruffles, rosettes, buttons, sequins, etc.



5. Once it is embellished turn right-side-out. Pin the bottom edge rounded edge together and sew closed with your sewing machine.

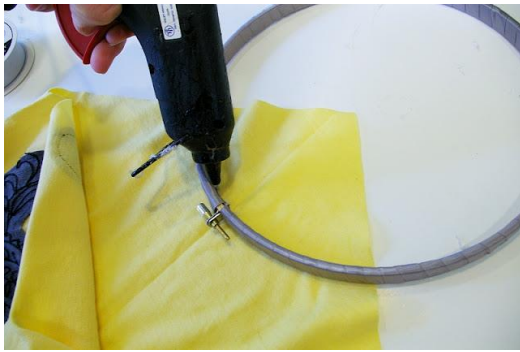
6. For the handles, wrap each embroidery hoop with wide ribbon. Use hot glue to secure the end and wrap tightly overlapping the ribbon. Every few inches add another drop of hot glue to keep the ribbon in place and from unraveling.



7. To attach the handles, lay out the purse and fold back the top. Place the handle so there is about 3 ½ - 4" from the handle to the top point.



8. Add a small running bead of hot glue to the handle and fold the fabric over it. This will help the fabric from bunching up to tightly and keep it spread out wide. Repeat on the opposite side with the other handle.



9. For the finishing, keep the folded triangle piece around the handle in place (and for some extra design interest) by adding a large grommet to the center under each handle.



And you are done!



Chevron Swing Top

By: [Megan from Brassy Apple](#)

You're sure to get compliments with this one hand sewn top. The Chevron Swing Top is easy to make and incorporates one of the latest trends. If you've been meaning to give chevron a try, use this free sewing pattern and get ready to impress.



Materials:

- 1 yard of knit/poly fabric
- Scissors
- Measuring Tape
- Straight Pins
- Seam Ripper (optional)
- Sewing Machine
- Coordinating Thread
- Chevron Stencil/template pattern to trace (this chevron was 2 - 2.5" wide)

Instructions:

1. Lay your fabric flat and cut a 27" X 27" inch square on the fold. Cut down the fold to create two 27 X 27" squares.

2. Cut a strip 2" X 58" long. This will be threaded through the neckline. Place right sides together lengthwise. Sew along the top creating a tube. Turn right side out and tie a simple knot in each end.



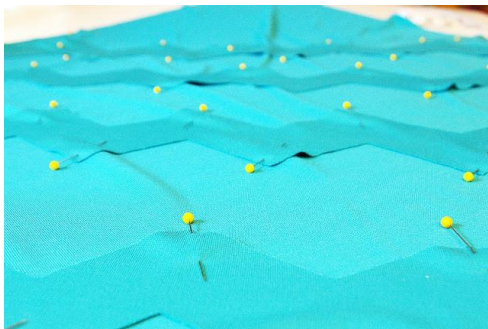
3. Add interest to the front by adding a pattern and texture. Using a chevron template as a pattern, cut a couple of long strips using the same knit fabric OR cut strips from an accent color fabric.



4. Measure out a 15" X 15" triangle. This will be folded over the back so do not place anything in this space.



5. Place and pin one chevron strip onto one of the 27" X 27" squares in a design that you like. Be sure to "tilt" the square or turn it to a diamond shape while placing and pinning the strips. Add the chevron strips just at the top, over the entire top, just around the edges, etc.



6. Sew four lines on each Chevron strip. One along the top, one along the bottom, and two in the middle (trying to keep equal spacing between the lines). Repeat on all the strips.



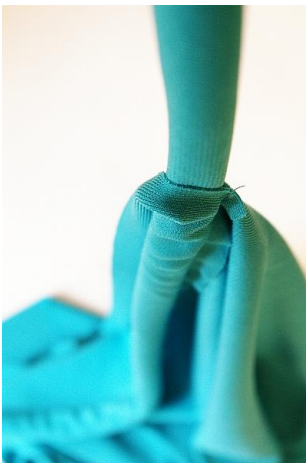
7. Using a seam ripper or your sewing scissors, carefully clip in between the top two lines and the bottom two lines. ONLY cut through the top layer of each strip. This will create fun lines and texture on the top.



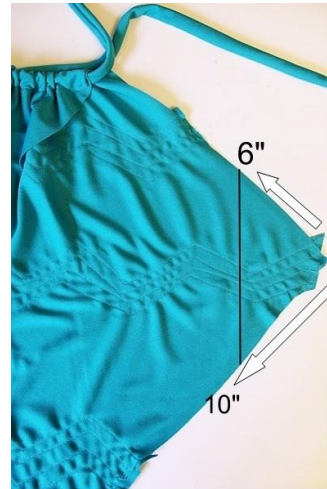
8. Turn the main piece over and fold down the top corner creating a Triangle with sides that measure 15". Sew a 1" casing along the top. Repeat on the back square piece as well. Clip away the excess fabric.



9. Take the finished strip from step 2 and thread it through the casing of both the front and back pieces.



10. Lay the front and back piece flat with right sides together. Measure in from the corner on each side to sew the two pieces together. Trim the excess fabric.



11. Turn right-side-out and slip on. Adjust the gathers to be the width you like and tie over one shoulder.



DIY Anthropologie Inspired Bolster Pillow

By: [Jessica from Sew Homegrown](#)

Looking for a way to make a trendy pillow without breaking the bank? The DIY Anthropologie Inspired Bolster Pillow is a great alternative. Make this cute pillow with fabric that fits your color scheme. It's a great way to get the look for less!



Materials:

- Two bags of Polyfil or a 23" X 9" bolster pillow form (you would probably have to order it)
- A yard of colorful fabric (fabric A)
- ¼ yard of contrasting fabric (fabric B)
- ¾ of solid fabric for cording (fabric C) - you could possibly use fabric A remnants
- 2 ½ yards of cable cord (don't be afraid of this, they sell it everywhere. It costs around .29 a yard)
- Perle Cotton Embroidery Floss
- Sewing Machine/Thread
- Scissors
- Water Soluble pen
- Pins

Instructions:

1. Once you have assembled your materials, you need to cut four pieces.

*One rectangle 29" X 20" of fabric A

*One rectangle 29" X 4 ½" out of fabric B



*two 10" circles out of fabric A

(you can draw your own or [print out my pattern here](#))

It's nice if you make the fabric pattern match.



2. Lay the 4 ½" strip on top of the rectangle, edge to edge, right sides together.



3. Pin together and sew using a $\frac{1}{4}$ " seam.
4. Open and press flat.



5. Time to add the detail. The Anthro bolsters have pick-stitching detail. You can mimic that look with a simple large quilting stitch.



6. Draw lines across the fabric, 2-3 inches apart (these are 3"), using a water soluble pen.



7. You can alternate embroidery floss colors every two rows (the Anthro ones alternate every three).



8. You can skip this stitching detail step.
9. For cording, lay your fabric out like this:





10. Fold the bottom right corner of the selvage edge up to the top left corner of the cut edge.



11. You can split that fold with your scissors.



12. Then measure along that diagonal edge you just split 1 1/2".



13. Cut both layers, resulting in two bias strips 1 1/2" x 31".



14. Now, fold one strip in half and place the cording in the crease.



15. You will probably need to put the zipper foot on. It looks like this:



16. Topstitch along the fabric right next to the cording.



17. The finished cording looks like this:



18. Once you have finished both pieces of cording, snip $\frac{1}{4}$ " into the lip - this will make it fit around the circle gracefully.



19. Pin the cording lip to the right side of the circle. Match the raw edges of the circle and the cording.



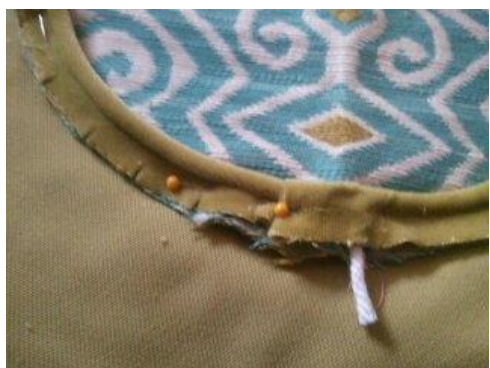
20. When you make it all the way around the circle, open one end (you may need to rip the seam just a little) and fold the raw edge back.



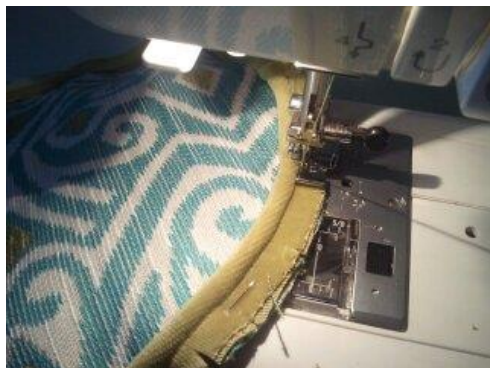
21. Pull that cording out of the way, and lay the other end of cording in its place.



22. Close the fabric over the cord.



23. Topstitch it on like this:



24. Right sides together, pin the 29" edge of the rectangle around the circle.

25. You will need to clip the edge of the rectangle just like you clipped the cording lip.



26. Sew in place (still feeling for the cording - you don't want to sew over it).



27. You basically sew right next to the cording three times - once while making the cording, once around the circle, and once around the rectangle.

28. Repeat with the other side or the rectangle.



Now stare in AMAZEMENT at your success!

29. Flip it right-side-out to make certain it looks pretty.

30. Then flip it inside out and sew along the 24" side of the pillow - leave about a 6" opening for stuffing (if you are using a pillow form, you will need to leave a larger opening).

31. Flip the pillow right-side-out and stuff well with polyfil. Pin the closing.



32. Whipstitch or blind stitch the opening closed.

How to Make a Quick Cuff Bracelet

By: [Robie from So Sew Something](#)

Learning How to Make a Quick Cuff Bracelet makes a great project for any beginner sewist. Following this tutorial will give you a cool accessory to throw on with any ensemble. Plus, you can use up old scraps through a simple and fun project.



Materials:

- "Jelly Roll" or Fabric scraps
- General Sewing Supplies



Instructions:

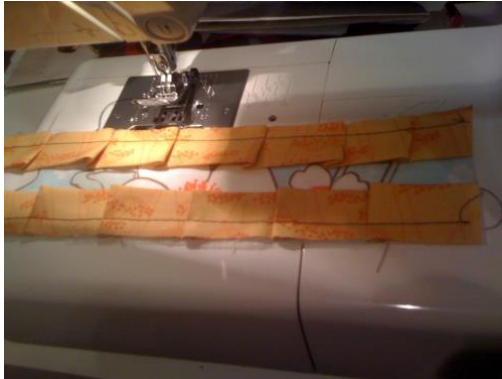
1. Unroll your jelly roll/scrap fabric.



2. Wrap your favorite strip around your wrist to determine where to trim off the excess. Cut two identical strips.



3. Choose your second favorite fabric to serve as the coordinating ruffle. Attach it to the top and bottom of the cuff. Fold it in half, press, and trim off about ½"



4. Sew the ruffle fabric onto the two sides, making your ruffles/pleats as you go. Of course you could opt to make your pleats/ruffles ahead of time if you prefer. It's much faster just to wing it.



5. Apply fusible interfacing to the second strip of the main fabric. Then, sew both main fabric strips together, right sides facing.



6. Turn right-side-out and press. Next, finish your two edges however you like.



7. To fasten the two edges, simply attach a snap.



Bachelorette Party Dress

By: [Suzannah from Adventures in Dressmaking](#)

There's nothing more fun than a night out with your girlfriends. For a bachelorette party (or really any fun occasion) the Bachelorette Party Dress makes the perfect outfit. For instructions on how to sew a dress for a special night, follow this tutorial.



Materials:

- Ruffle Fabric
- Bodice Fabrics
- Strapless Dress Pattern
- Lace
- General Sewing Supplies



1. Cut out the bodice of the under layer (pale pink twill), then cut out the lace with the same shape but with some extra to stick up off the top. For the seam allowances in this example, only an extra half inch at the most of the lace was needed.

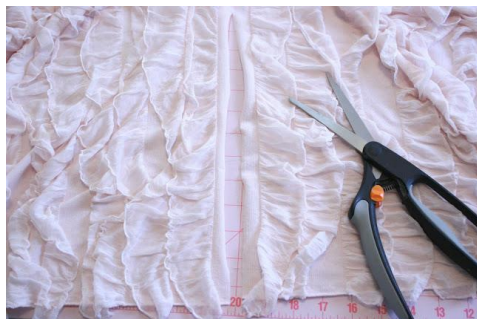


2. Overlap the bodice pieces 1" to allow for the ½" vertical seam allowance, so the lace is the right size.



3. This dress zips up the back - if you change where yours zips, take note at that part of the tutorial.

4. Once the bodice is cut out, tackle the skirt. Basically, measure yourself and decide what your skirt length should be. Here the skirt to comes down to just above the knees. Cut out one panel (one width of the fabric), cutting halfway between the rows of ruffles.



5. Make half of a second panel to drape with (the skirt will end up being 1.5 panels around), cut another piece the same length to about the middle of the fabric.

6. Cutting down the center of your folded fabric, along where the fold would be, cut vertically straight down to your cut edge.



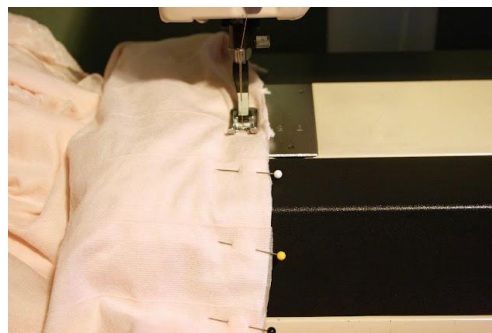
7. Back to the full panel, you'll cut off one corner so you can round off what becomes the top edge, which will be gathered.



8. You can round it off even more by cutting off any tiny pieces.



9. Sew your side seams like you would on any skirt. Sew two of your side seams, leaving the half piece open on whichever side you want to cross over it. The half-width panel will hang flat in the front, and one side of the full-width panel will cross over it.



10. Gather your curved edge of the wide panel.



11. Now you have a long curved, gathered piece. Mark the sides so you know where they

are.



12. Arrange the gathers mostly concentrated at the point where the long edge touches the waist seam. Pin a lot!



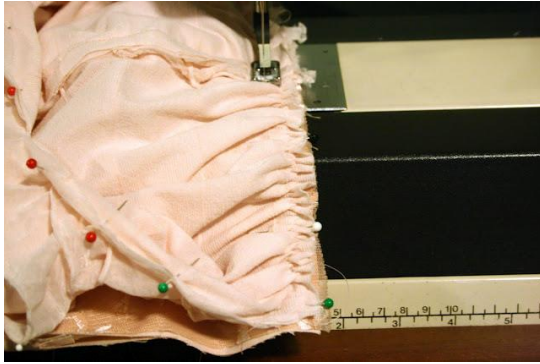
13. Create a center back placket for your zipper. An invisible zipper is best with this fabric.



14. Now, with all those pins still in place, gather all the way around the skirt, starting at the center back.



15. Now attach your skirt to your bodice. Watch where the center front curved part sits.



16. Flip and give it a little pressing so it stays flat at the waist, not too bulky.

17. You can gather the bottom few inches of the underskirt (the narrow piece) so it doesn't risk hanging down below the swooped up overlap. Do a gathering stitch with strong thread and tie off the ends.



And here it is!

Classic A-Line Dress

By: [Emily from Nap-Time Creations](#)

This Classic A-Line Dress tutorial is the ideal project to make if you're just starting to learn how to sew a dress, because it shows you how to create one piece from a completely different pattern. Take a look and find out how Emily from Nap-Time Creations adjusted a shirt sewing pattern into a dress of her own. It yields such a great result, custom-fit for you.



Materials:

- Top pattern of your choice
- Fabric to allow for the bodice of your dress and extra skirt.
- General Sewing Supplies

Instructions:

1. Print the pattern and cut out for your size. Note - this pattern was size four.
2. Place pattern over fabric. Do not cut out. Draw an appropriately sized triangle to add a cap sleeve to the design.



3. Also make sure to allow for skirt length before cutting out your pattern. The front of your bodice will be wider because of the pleats at the neckline. You can trim the skirt width to match the back.



4. If you'd like to include a pocket, cut out a shape that you'd like for the dress. Pin it to the side of the dress.
5. Place it over your shoulders after you have sewed those and see where you want the pocket to be.
6. Sew a pocket (from pin to pin) to the front of the skirt and to the back of the skirt.



7. After you have sewed them to the front and back, pin down the side-seam and around the outside of the pocket. Turn it back right-side-out and top-stitch the pocket opening.



8. Finish up the dress following the rest of your pattern instructions. Unlike the pattern in this example, the neckline and arm holes are made with a hidden bias tape and opposed to the outside like the tank.



Femme Fatale Cocktail Dress

By: [Maz from Be a Crafter XD](#)

You'll bring the party to a grinding halt in this gorgeous Femme Fatale Cocktail Dress. This DIY dress is absurdly easy and quick to make, but looks absolutely phenomenal once it's finished. If you're a beginner sewist just starting to learn how to make your own clothes, this is the perfect project for you. The end result is so elegant and understated. It has a nice length and a wonderful striped detail at the ribcage that really pulls the whole thing together. This dress will become your cocktail party go-to!



Materials:

- Fine Cloth (any type and color you like)
- Zipper
- Scissors
- Sewing Needle
- Sewing Thread

- Sewing Machine
- Measuring Tape & Ruler
- Tailor's Chalk

Note: For this pattern, you'd better draft it on paper then put it on your fabric and cut out.

----- basic pattern line

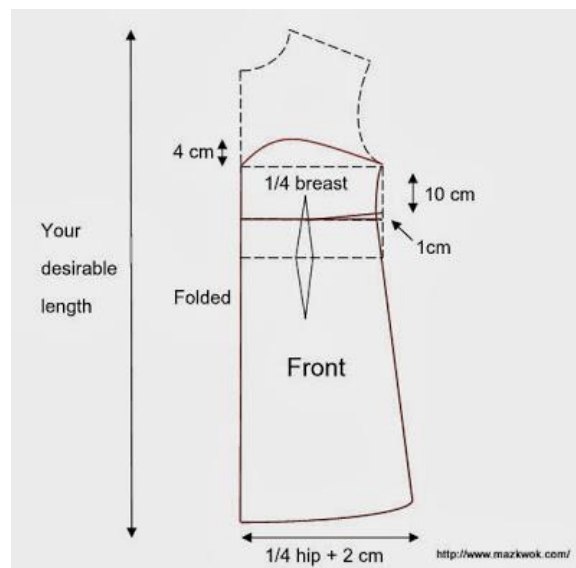
_____ dress line to cut out

Instructions:

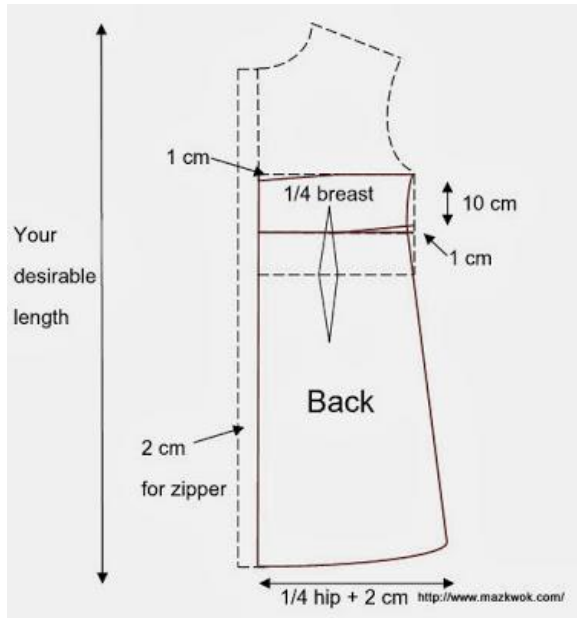
1. The common length of a cocktail dress is knee length or tea length. You'll see each side of this dress has two parts, the body part and skirt part.

For the front side, remember to fold your fabric.

Pleat: 2cm width, 16 cm length



2. For the back side, remember to add 2 cm for the zipper line. At least 35 cm zipper length.



3. Sew body parts to skirt parts.
4. Sew pleats.
5. Cut and sew braces for both the front and back sides.

The front brace:



6. Attach a zipper to the back side (this tutorial uses an invisible zipper).

7. Sew the body lines.
8. Make two straps and attach to the front side.
9. Sew hemlines and finish!



Easy Summer Halter Dress

By: [Deby from So Sew Easy](#)

Add some style to your summer in a breeze. This Easy Summer Halter Dress is a simple way to add some flair to your warm-weather wardrobe. The provided pattern will walk you through making a simple dress that you will love to wear to the beach, a barbecue, or just to lounge around. Sewing your own clothes is a great way to stay up on style without breaking the bank. Choose your favorite fabric and the style you like best for the straps, then sew away. You might even want to make a few in different colors.



Materials:

- Sewing machine and thread, sewing basics such as scissors
- Clear Elastic 3/8th inch wide

Optional but useful

- Wash Away Wonder Tape
- Knit stay tape or Stitch Witchery

- Stretch or ball point needle
- Twin Stretch Needle
- [Details on pattern and sizing instructions](#)

Instructions:

1. Identify the back of the dress (the longer piece) and add a strip of Wash Away Wonder Tape to the top edge, just inside the raw edge on the wrong side.



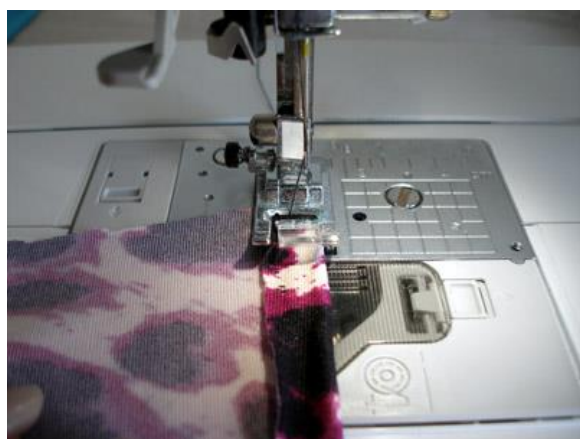
2. Measure across the top edge and cut a length of Clear Elastic 1 inch LESS than the top edge measurement. If you can't get the clear elastic, then you can also use a regular elastic but it will be bulkier.

3. Remove the backing tape from the sticky tape and stick your clear elastic in place along the top edge, centering the elastic with about 1/2 inch clear at each end. If you don't have the sticky tape, then you can pin the elastic in place.



4. Take your dress to the sewing machine and with the wrong side facing up, turn the top seam over using the elastic as a guide to get a straight line. Fit your Stretch or ball point needle. Sew the elastic in place using a triple zigzag stitch if your machine has one (it's like a wide zigzag where each part is made of three small stitches.) If you only have a regular zigzag stitch, use this on a wide setting to sew through the elastic.

6. Time to make the bust part of the dress. Take the rectangular piece and sew a line of long basting stitches between the circles, $\frac{1}{4}$ inch from the edge. Do not back-stitch at each end and leave the thread ends long. Repeat on both sides.



5. Here's what it looks like from the outside. The stitches allow it to still stretch and the elastic will hold it snugly against your body so the dress doesn't fall! Set aside the back for now.

7. Fold the fabric at the off-center notch, with the WRONG sides together. Put in a pin at the fold and then match up the corners and pin these too. Gently pull the gathering threads to gather up the fabric between the circles. Continue to gather until the gathered edge measures the same as the flat edge.



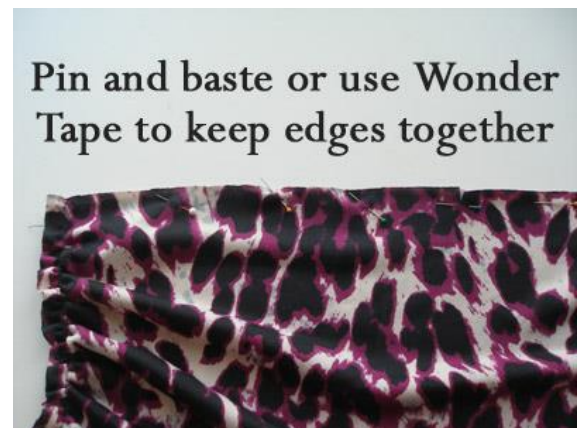
8. Once both edges match in length (or close enough), match up the raw edges and pin together. Repeat these steps for the opposite side.



9. Take the fabric to the machine, and with the gathers facing upwards and the raw edges matching, sew in place along the previous line of basting stitches. Adjust the gathers as you sew. Repeat for the other end.



10. Now match the two remaining raw edges on this piece. You need to keep these together. You can either use your Wonder Tape to baste the two edges together, or match, pin, and sew close to the edge.



11. To make the small piece that gathers the center of the bodice, find the small rectangular piece of fabric you cut earlier. Fold the wrong sides facing with the two shorter sides together – see arrows.



12. Sew along the shorter side to make a tube of fabric. Use a narrow zigzag stitch so this can stretch.



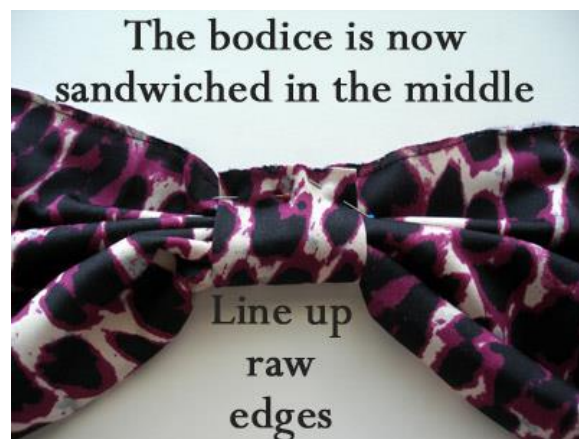
13. Turn inside-out and center the seam line facing upwards. This will be in the inside of the gathering piece.



14. Place your bodice piece on top with the raw edges even, and line up the center notch on the bodice with the center seam line on the gathering piece. Pin in place.



15. Roughly pleat the bodice in the center and bring up the other end of the gathering piece, matching the centers and raw edges until you have a bow shape. Remove pins and replace them through all layers. Sew close to the edge through all layers. An overcasting stitch works best, or a zigzag close to the edge.



16. Now match up the bodice piece with the waist piece. The gathered side of the bodice will be the right side or outside. You can see that the top part will need to be eased into the mid-section.



17. Pin the two pieces right-sides-together, stretching the mid-section piece a little to match to the width of the bodice piece. Line up the center front and the outside seams. It will look a little awkward, like this:



18. Carefully sew the two together using a narrow hem. You can sew with the bodice piece upwards to check as you sew that you are sewing the hem a little wider than your earlier basting stitches along the bottom edge. This saves removing them later.



Bodice and mid-section panel completed

19. Now match up raw edges on the bottom of the mid-section with the top of the front skirt. Pin and stitch in place, right sides together, using a narrow zigzag stitch or an overcasting stitch and foot. The front piece is now complete.



Match up the bodice with the skirt front

20. Pin the dress back to the dress front, right sides together along the side seams. Start to pin at the bottom edge keeping fabric even. The front of the dress is slightly longer than the back to allow extra room for the bust. Once you have pinned to approximately the waist area, match the top of the dress back and front, and pin. Then stretch the fabric of the back piece slightly to match the front piece and pin the remaining side seams together. Try on the dress for fit before sewing. Careful with the pins!

Stretch the back from the waist up, to match the front length



21. Sew the side seams using approximately a half inch seam. Sew with the gathered bodice side up so that you can make sure that your side seam is slightly larger than the existing basting stitches on the gathered panel to make sure those stitches won't show on the outside.

22. Now try on your dress and see if you need to make any adjustments in those side seams to get a nice fit.

23. Finish the side seams by either pressing them open and then flat, or trimming and finishing with an overcasting stitch to neaten the edges. You can see narrow overcast seams in this photo – this gives a nice finish on the inside.



24. Create a smooth hemline. You don't want to spoil all the hard work now with a wavy seam as can often happen with knit fabrics, so use a knit

stay tape along the bottom before sewing. Or at least test your intended hemming method and stitch on some scrap fabric first. Iron your stay tape just inside the edge of the fabric.



25. Turn your hem to the inside using the edge of the stay tape as a guide and pin in place. If you have a Twin Stretch Needle, you can use this for a professional, neat, and stretchy hem (remember to sew it face up with the twin needle). If using a single needle, hem with the wrong side up and a single line of straight stitches.





26. Your (strapless) dress is now ready to wear! However, you might want to add some support for the bodice. Try some of these optional ideas:

- Thread some ribbon/lace/leather/cord through the gathering band at the center of the bodice and tie behind the neck.
- Braid three X inch-wide pieces of fabric to make a central halter strap.
- Make two tubes of matching (or contrasting) fabric and stitch to the bodice 'cups' to create a halter neck. Make them wide or narrow as you prefer. A good option for a larger bust.
- Use a braided strap from the cups to behind the neck.
- Make two tubes of fabric and attach them as straps from the bust to the top of the dress at the back. Place them carefully to cover your bra straps for even more support.

Tunic Dress Tutorial

By: [Justine from Sew Country Chick](#)

Make your own comfy knit dress with this Tunic Dress Tutorial. This easy sewing project is perfect for beginners and is quick to make. It's a simple, flattering design that looks great with a fun patterned fabric.



Materials:

T-Shirt (from which to trace the pattern)

Fabric

General Sewing Supplies

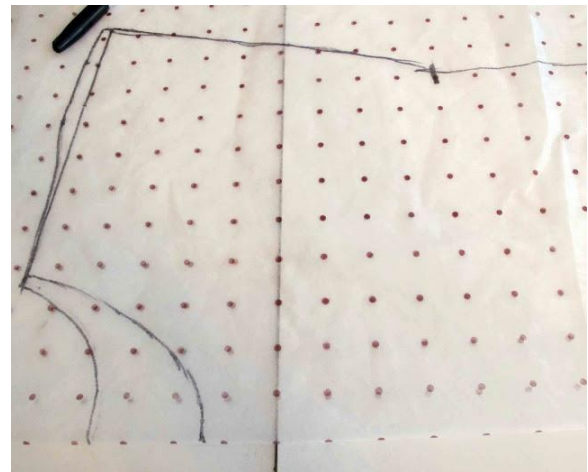
Instructions:

1. Trace around a t-shirt. Extend the armhole as pictured to make a one piece, dolman-sleeved, dress pattern.

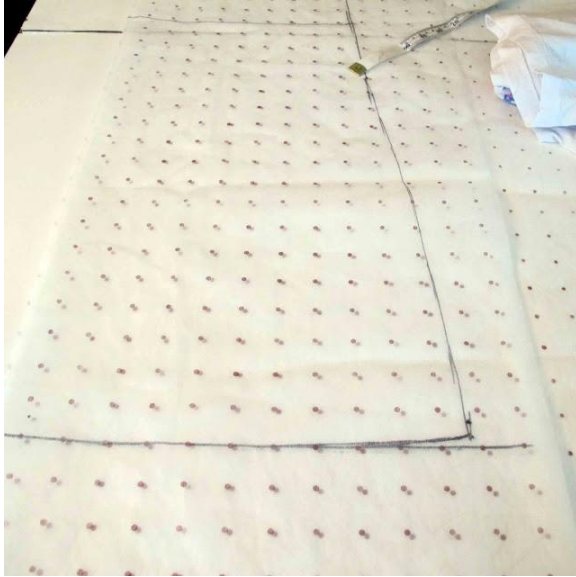


2. Mark on your fabric where your side seam ends. Draw in your neckline. You can make it lower to create a scoop as shown here or leave it as is. Mark where your casing will be sewn on at the waist. Also measure how long your hem will be.

3. Add your 5/8 inch seam allowances.



4. Lift up your hem at the side seam about 1/2 inch to eliminate side droop. A good way to do this is to measure from the waist line down to the hem from the CF and then the side. Make sure they are the same length.



5. Draw a line to sew on the casing for the elastic. Finish your neck, sleeves, and hem with a cover stitch machine. You can also get the same effect with a twin needle on a basic machine. Just fold over your fabric 5/8 inch, press them, and stitch.



6. For the waist casing you can use a lycra knit binding which works. You can also use bias tape ironed flat or make your own casing from your dress fabric. Just make it about 1/2 wider than your waist elastic. This elastic is 3/4 inch wide so

the band was made. Sew it on with a very small seam allowance, between 1/8 and 1/4 inch. Elastic for the waist should be about 2 to 3 inches smaller than the waist measurement.



If you are quick this pattern will take about half an hour to make and cut and about an hour to two hours to sew.

ALLFREESEWING

Free Patterns To Keep You In Stitches



A special thanks to our contributors:

Deby from [So Sew Easy](#)
Disney from [Ruffles & Stuff](#)
Emily from [Nap-Time Creations](#)
Jessica from [Sew Homegrown](#)
Justine from [Sew Country Chick](#)
Lex from Made by Lex
Maz from [Be a Crafter XD](#)
Megan from [Brassy Apple](#)
Robie from [Sew Sew Something](#)
Suzannah from [Adventures in Dressmaking](#)
Sharon from [Sharon Sews](#)

Sign up for our [free sewing newsletter](#) and receive more low-cost collections, free sewing projects, quick tips, home décor ideas and more right in your inbox every week.